



Wizard fluid system llc

Pumps | Motors | Pipe | Valves

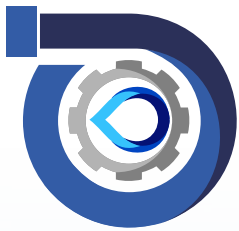


Submersible Rewindable Motors

Performance Data Book

60 Hz.

www.wizardfluidsystem.com



Wizard fluid system llc

Pumps | Motors | Pipe | Valves

Wizard Fluid system LLC is manufacturer of fluid system like Pump, Motors, & Pump Spares. Stainless steel Submersible pumps is our flagship product.

A group of engineers embarked on a journey to develop a quality & affordable solution for fluid system in America. Having skills and strength to develop a sustainable business model, we decided to dive-in and explore the possibility whereby we can offer our customer right product for the right job.

Knowledge and technical know-how is our strength. This enables us to identify high quality product, produced on precision machine for our customers.

Our goal is to offer our customer Pumps, Motors, Vales and allied products like pipes and vales etc. We have invested time and money with our partners to develop product to meet the requirement of our customers. It is our Quality Assurance that guarantees flaw less, trouble free product at the door steps.

Our Vision

To is to provide our customer product made for American market at an affordable price, by investing our time and energy to ensure Total Customer satisfaction.

Our Mission

- To identify and provided product from ISO 9001 certified manufacturing facility.
- Quick response & prompt delivery and after sales service.
- Focus on Energy efficiency product and manufacturing process.





INDEX

Water Filled Rewindable Motor Data

	Page No.
4" 4WS2E	
Technical Data	4
Performance Data	5
4" 4WS3E/4WS4E	
Technical Data	6
Performance Data	7
6" 6WS4E	
Technical Data	8
Performance Data	9
6" 6WVG	
Technical Data	10
6" 6WVS	
Technical Data	11
6" 6WVG / 6WVS	
Performance Data	12
8" 8WVG	
Technical Data	13
Performance Data	14
Control Box	15



Technical Data

4" 2 Wire Encapsulated Submersible Motor

4WS2E

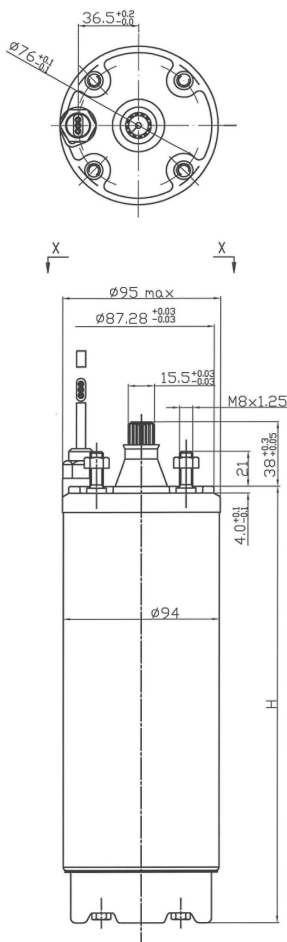


TECHNICAL SPECIFICATIONS

- Encapsulated resin filled stator.
- Built in electronic starter.
- Built in thermal overload.
- Built in lightning arrestor.
- Upper bracket: Cataphoresis treated cast iron plus SS304 cover cap.
- Motor case: SS 304.
- Motor shaft: SS 304.
- Shaft end and coupling: NEMA standard.
- Kingsbury thrust bearing.
- Winding: enameled copper – Class F insulation.
- Degree of protection: IP68/Class B insulation.
- Max temp. 35° with water cooling flow min. 0.08 m/s.
- Max dept immersion: 150 m.
- Nos. of start per hour: max 30 at regular intervals.
- Labyrinth seal, sand slinger and lip seal.
- Coolant: water and propylene glycol.
- Motor cable length: 1,75 m (2 wires plus ground).
- Voltage variation: +6 / -10%.
- Suitable for horizontal operation.

VERSION

- Single Phase: 0.37kW (0.5hp) to 1.1kW (1.5hp), 220-230V / 50Hz (or 60 Hz).
- Other voltage and frequencies available upon request.



DIMENSION AND WEIGHT

V115 / 50-60HZ									
Type	kW	Hp	Axial thrust	H mm	Cable Sez. mm ²	A mm	B mm	Weight Kg	
4WS2E 050S1	0,37	0,5	1500 N	270	1,5	5,3	10,7	7,2	
V220-240 / 50-60HZ									
Type	kW	Hp	Axial thrust	H mm	Cable Sez. mm ²	A mm	B mm	Weight Kg	
4WS2E 050S2	0,37	0,5	1500 N	270	1,5	5,3	10,7	7,2	
4WS2E 075S2	0,55	0,75		295				8,5	
4WS2E 100S2	0,75	1	315	11,2					
4WS2E 150S2	1,1	1,5	3000 N	290				14,2	



Performance Data

4" 2 Wire Encapsulated Submersible Motor

4WS2E

		SINGLE PHASE															
60Hz.		Thrust Load	Weight	H	kW	Hp	In	Istart	Amps s.f.	RPM	Cosφ	Ts/Tn	EFF%	S.F.	Rm	Starting torque Nm	Ts/TN
		N	Kg	mm			Amp										
115 V	4WS2E 050S1	1500	7,5	272	0,37	0,5	9,8	61,0	13,0	3550	0,7	0,58	50	1,6	1,17	0,8	0,8
220 V	4WS2E 050S2		7,5	272	0,37	0,5	4,8	31,0	6,4	3500	0,7	0,58	50	1,6	4,96	0,8	0,8
	4WS2E 075S2	1500	8,4	295	0,55	0,75	7	39	9,3	3490	0,73	0,6	54	1,5	3,82	1,2	0,8
	4WS2E 100S2		9,2	315	0,75	1	8,4	50	12,0	3490	0,71	0,6	57	1,4	2,48	1,9	0,9
	4WS2E 150S2	3000	12,5	390	1,1	1,5	12	71	15,4	3490	0,73	0,6	60	1,3	1,87	2,5	0,8



Technical Data

4" Encapsulated Submersible Motor

4WS3E/4WS4E

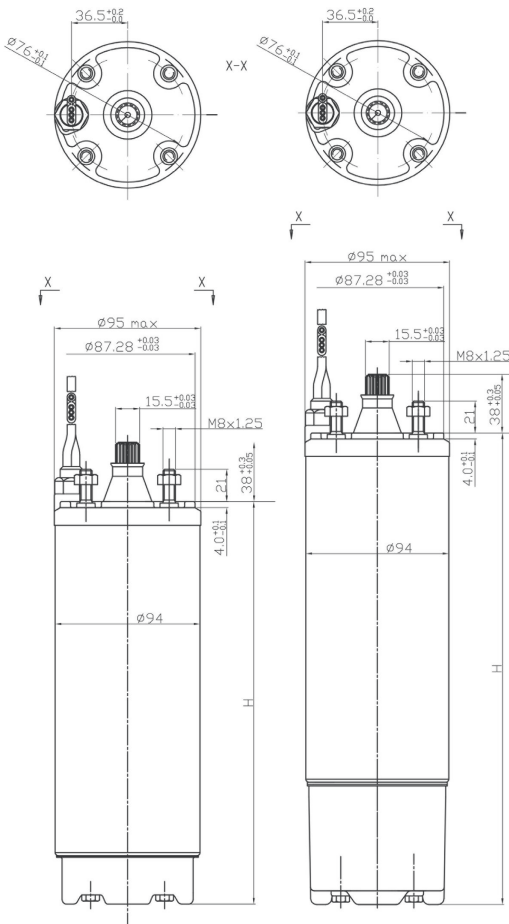


TECHNICAL SPECIFICATIONS

- Encapsulated resin filled stator.
- Upper bracket: Cataphoresis treated cast iron plus Ss304 cover cap .
- Motor case: SS 304.
- Motor shaft: SS 304.
- Shaft end and Coupling: NEMA Standard.
- Kingsbury thrust bearing.
- Winding: enameled copper - Class F insulation.
- Degree of protection: IP68/Class B insulation.
- Max temp. 35° with water cooling flow min. 0.08 m/s.
- Max dept immersion: 150 m.
- Nos. of start per hour: max 30 at regular intervals.
- Labyrinth seal, sand slinger and lip seal.
- Coolant: water and propylene glycol.
- Motor cable length: 1,75 to 4 m according to motor size (3 wires plus ground).
- Voltage variation: +6 / -10%.
- Single phase motor available in both version CSCR & PSC.
- Suitable for horizontal operation.

VERSIONS:

- Single Phase: 0.37kW (0.5hp) to 4kW (5.5hp), 220-230V / 50Hz (or 60 Hz).
 - Three Phase: 0.37kW (0.5hp) to 7.5kW (10hp), 380-415V / 50Hz – 460V / 60Hz.
 - Axial thrust: - 1500 N from 0.37kW to 0.75kW
 - 3000 N from 1.1kW to 2.2kW
 - 6500 N from 3kW to 7.5kW.
- Other voltage and frequencies available upon request.



DIMENSION AND WEIGHT

	Type	kW	Hp	Axial thrust	H mm	Cable			Weight Kg				
						Sez. mm ²	A mm	B mm					
SINGLE PHASE V220-240 / 50HZ	4WS3E 050S2	0,37	0,5	1500 N	250	1,5	5,6	18,8	6,8				
	4WS3E 075S2	0,55	0,75		265				8,1				
	4WS3E 100S2	0,75	1		295				10,6				
	4WS3E 150S2	1,1	1,5		340				11,2				
	4WS3E 200S2	1,5	2		375				14				
	4WS3E 300S2	2,2	3		430				16,4				
THREE PHASE V380-415 / 50HZ	4WS3E 500S2	3,7	5	6500 N	675	1,5	5,6	18,8	29,4				
	4WS4E 050T4	0,37	0,5	1500 N	235	1,5	5,6	18,8	5,8				
	4WS4E 075T4	0,55	0,75		250				7				
	4WS4E 100T4	0,75	1		265				8,3				
	4WS4E 150T4	1,1	1,5		295				10,9				
	4WS4E 200T4	1,5	2		340				11,4				
	4WS4E 300T4	2,2	3		375				14,2				
	4WS4E 400T4	3	4		480				18,3				
	4WS4E 550T4	4	5,5		6500 N				555	1,5	5,6	18,8	23,4
	4WS4E 750T4	5,5	7,5		675				29,4				



Performance Data

4" Encapsulated Submersible Motor

4WS3E/4WS4E

CSIR - CSCR SINGLE PHASE

60Hz.	Thrust Load	Weight	H	kW	Hp	In	Istart	Imax	RPM	Cosφ	EFF%	Crun	Cstart	S.F.	Ω	Ω	Ω	Ts/TN	
	N	Kg	mm			Amp	μF					aux	main						
230 V	4WS3E 050S2		7,3	260	0,37	0,5	5,5	22	6,4	3540	0,7	57	59-71	1,60	17,74	5,01	1,8	1,8	
	4WS3E 075S2	1500	7,6	265	0,55	0,75	7	32	9,3	3520	0,7	62	86-103	1,50	12,30	3,70	2,9	1,9	
	4WS3E 100S2		9,1	305	0,75	1	8,5	40	12,0	3510	0,7	58	105-126	1,40	7,78	2,44	3,6	1,7	
	4WS3E 150S2		11,2	340	1,1	1,5	10,1	49	13,0	3500	0,82	65	16	116-125	1,30	7,12	2,17	2,5	0,83
	4WS3E 200S2	3000	14	375	1,5	2	11,6	52	15,0	3500	0,84	67	20	116-125	1,25	5,89	1,72	7,6	1,8
	4WS3E 300S2		16,4	430	2,2	3	14,8	68	16,9	3470	0,96	67	35	208-250	1,15	3,42	1,49	12	1,96
	4WS3E 500S2	6500	29,3	675	3,7	5	25,5	88	27,8	3580	0,91	69	80	290-310	1,15	1,78	0,79	19	1,84

THREE PHASE

60Hz.	Thrust Load	Weight	H	kW	Hp	In	Istart	Imax	RPM	Cosφ	EFF%	Starting torque Nm	Ts/TN	S.F.	R	
	N	Kg	mm			Amp										
380 V	4WS4E 050T3		5,8	235	0,37	0,5	1,3	6	2,00	3510	0,70	62	2,6	2,6	1,60	31,23
	4WS4E 075T3	1500	7	250	0,55	0,75	2,0	10	3,00	3510	0,70	64	4,8	3,2	1,50	17,81
	4WS4E 100T3		8,3	265	0,75	1	2,6	13	3,60	3510	0,70	66	6,51	3,1	1,40	12,89
	4WS4E 150T3		10,9	295	1,1	1,5	3,3	18	4,20	3480	0,71	71	9,3	3	1,30	10,2
	4WS4E 200T3	3000	11,4	340	1,5	2	4,2	25	5,20	3410	0,80	68	13,02	3,1	1,25	7,37
	4WS4E 300T3		14,2	375	2,2	3	6,3	35	7,20	3400	0,76	70	17,69	2,9	1,15	4,77
	4WS4E 400T3		18,3	480	3	4	7,8	40	9,00	3450	0,78	76	26,88	3,2	1,15	4,09
	4WS4E 550T3	6500	23,4	555	4	5,5	10,2	55	12,00	3440	0,76	78	33,3	3	1,15	3,51
	4WS4E 750T3		29,4	675	5,5	7,5	14,5	82	17,30	3440	0,78	73	48,64	3,2	1,15	3,98
	4WS4E 100T3		33,8	765	7,5	10	22,0	102,0	25,0	3490	0,72	74	60,61	2,9	1,15	1,23
220-230 V	4WS4E 050T2		5,8	235	0,37	0,5	2,3	10,4	3,5	3510	0,70	62	2,6	2,6	1,60	11,22
	4WS4E 075T2	1500	7	250	0,55	0,75	3,5	17,3	5,2	3510	0,70	64	4,8	3,2	1,50	5,79
	4WS4E 100T2		8,3	265	0,75	1	4,5	22,5	6,2	3510	0,70	66	6,51	3,1	1,40	4,56
	4WS4E 150T2		10,9	295	1,1	1,5	5,7	31,2	7,3	3480	0,71	71	9,3	3	1,30	3,4
	4WS4E 200T2	3000	11,4	340	1,5	2	7,3	43,3	9,0	3410	0,80	68	13,02	3,1	1,25	2,45
	4WS4E 300T2		14,2	375	2,2	3	10,9	60,6	12,5	3400	0,76	70	17,69	2,9	1,15	1,59
	4WS4E 400T2		18,3	480	3	4	13,5	69,3	15,6	3450	0,78	76	26,88	3,2	1,15	1,36
	4WS4E 550T2	6500	23,4	555	4	5,5	17,7	95,3	20,8	3440	0,76	78	33,3	3	1,15	1,16
	4WS4E 750T2		29,4	675	5,5	7,5	25,1	142,0	30,0	3440	0,78	73	48,64	3,2	1,15	0,66
	4WS4E 100T2		33,8	765	7,5	10	38,1	176,7	43,3	3490	0,72	74	60,61	2,9	1,15	0,41
460 V	4WS4E 050T4		5,8	235	0,37	0,5	1,2	6,8	1,60	3510	0,70	60	2,6	2,6	1,60	39,7
	4WS4E 075T4	1500	7	250	0,55	0,75	1,6	10,5	1,95	3500	0,70	65	4,8	3,2	1,50	26,3
	4WS4E 100T4		8,3	265	0,75	1	2	12,5	2,50	3490	0,70	67	6,51	3,1	1,40	24
	4WS4E 150T4		10,9	295	1,1	1,5	2,8	15	3,30	3475	0,71	69	9,3	3	1,30	14,17
	4WS4E 200T4	3000	11,4	340	1,5	2	3,5	22	4,20	3470	0,76	71	13,02	3,1	1,25	10,54
	4WS4E 300T4		14,2	375	2,2	3	4,9	30,5	5,50	3450	0,75	75	17,69	2,9	1,15	7,8
	4WS4E 400T4		18,3	480	3	4	6,5	45	7,20	3470	0,75	77	26,88	3,2	1,15	5,27
	4WS4E 550T4	6500	23,4	555	4	5,5	9	62	9,90	3470	0,76	77	33,3	3	1,15	3,97
	4WS4E 750T4		29,4	675	5,5	7,5	12	77	13,30	3470	0,78	77	48,64	3,2	1,15	3,3
	4WS4E 100T4		33,8	765	7,5	10	16,2	95,0	18,5	3460	0,78	77	60,61	2,9	1,15	2,2



Technical Data

6" Encapsulated Submersible Motor

6WS4E

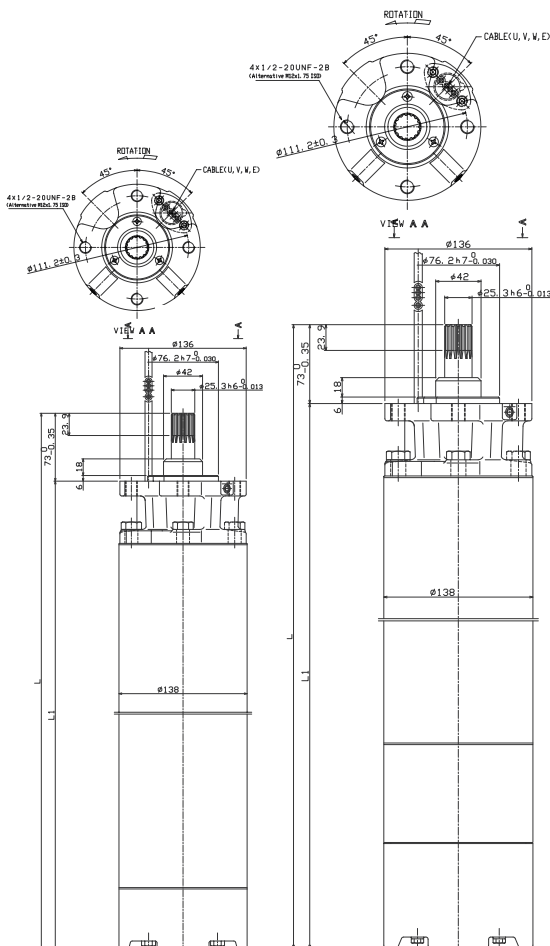


TECHNICAL SPECIFICATIONS

- Encapsulated resin filled stator.
- Upper and lower bracket: Cathaphoresis treated cast iron.
- Motor case: SS 304.
- Motor shaft: SS 431.
- Shaft end and coupling: NEMA Standard.
- NEMA standard power side bracket: UNF threaded holes upon request.
- Kingsbury thrust bearing.
- Winding: enameled copper - Class F insulation.
- Degree of Protection: IP68/Class B insulation.
- Max temp. 35° with water cooling flow min. 0.16 m/s.
- Max depth immersion: 350 m.
- Nos. of start per hour: max 20 for D.O.L. type.
- Mechanical seal: SiC/SiC.
- Sand slinger.
- Coolant: water and propylene glycol.
- EPDM flat blue cable - AWG stranded version upon request.
- Motor cable length: 4 m (3 wires plus ground).
- Voltage variation: +/-10%.
- Starting method: D.O.L / Star-Delta
- Suitable for horizontal operation.

VERSIONS:

- Single Phase: 3.7kW (5.5hp) to 11kW (15hp), 220-230V / 50Hz (or 60 Hz).
 - Three Phase: 3.7kW (5.5hp) to 45kW (60hp), 380-415V / 50Hz – 460V / 60Hz.
 - Axial thrust: - 7.840 N or 15.500 N from 3.7kW to 11kW
 - 15.500 N from 15kW to 22kW
 - 27.500 N from 30kW to 45kW.
- Other voltage and frequencies available upon request.



DIMENSIONS AND WEIGHT

Type	kW	Hp	Axial thrust	L mm	Weight kg
6WS4E 550	3,7	5,5	7.840 N	535	32,5
6WS4E 750	5,5	7,5		577	36,5
6WS4E 1000	7,5	10		632	42
6WS4E 1500	11	15		698	48,5
6WS4E 550	3,7	5,5	15.550 N	644,5	44,5
6WS4E 750	5,5	7,5		686,5	47,5
6WS4E 1000	7,5	10		741,5	51
6WS4E 1500	11	15		807,5	56
6WS4E 2000	15	20		892,5	64,5
6WS4E 3000	22	30		1044,5	83,5
6WS4E 4000	30	40		1134,5	91,5
6WS4E 5000	37	50		1204,5	99,5
6WS4E 6000	45	60		1204,5	99,5



Performance Data

6" Encapsulated Submersible Motor

6WS4E

THREE PHASE													
60Hz.	Thrust Load N	Kg	H mm	kW	HP	Volts	Poles	A	RPM r/min	S.F.	S.F. (A)		
380/415 V	7840	6WS4E 550	32,5	462	4	5,5	230 460	2	15,8 7,9	3445	1,15	17,4 8,7	
		6WS4E 750	36,5	504	5,5	7,5	230 460	2	22,0 11,0	3450		24,4 14,2	
		6WS4E 1000	42	559	7,5	10	230 460	2	30,8 15,4	3440		33,0 16,5	
		6WS4E 1500	48,5	625	11	15	230 460	2	43,2 21,6	3450		47,0 23,5	
		6WS4E 500	44,5	571,5	3,7	5	230 460	2	15,8 7,9	3445		17,4 8,7	
		6WS4E 750	47,5	613,5	5,5	7,5	230 460	2	22,0 11,0	3450		24,4 14,2	
	15500	27500	6WS4E 1000	51	668,5	7,5	10	230 460	2	30,8 15,4	3440	1,15	33,0 16,5
			6WS4E 1500	56	734,5	11	15	230 460	2	43,2 21,6	3450		47,0 23,5
			6WS4E 2000	64,5	819,5	15	20	230 460	2	57,4 28,7	3450		63,0 31,5
			6WS4E 2500	71	891,5	18,5	25	230 460	2	69,0 34,5	3450		76,0 38,0
			6WS4E 3000	83,5	971,5	22	30	230 460	2	76,6 38	3500		85,0 42,5
			6WS4E 4000	91,5	1061,5	30	40	460	2	52,7	3490		58,0
			6WS4E 5000	99,5	1131,5	37	50	460	2	64,3	3480		70,8



Technical Data

6" Water Filled Rewindable Motor Data

6WVG



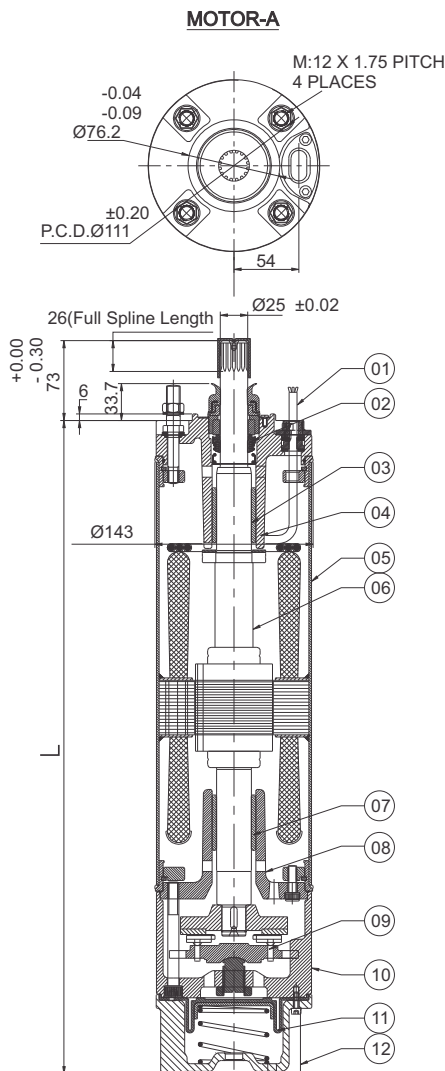
TECHNICAL SPECIFICATIONS :

- 6" Water Lubricated Submersible Motors are rewindable.
- Coupling dimensions as per NEMA standard.
- Winding wire : Polywrapped / PVC winding available on specific demand
- Degree of protection : IP68.
- Max water temperature : 35°C / 95°F
- Starts per hour : 30 times (Max.).
- Allowable voltage variation : +6% - 10%.
- Motor shaft of Stainless steel.
- Stator shell of Stainless steel.
- Max depth immersion : 350 M.
- Mounting : vertical / horizontal.
- Motor Cable length : 3 Meter / 3 Core with separate earth cable & 4 Core.
- Cooling Flow : $V=0.2$ M/S.
- Coolant : Clear Water.

VERSIONS

Motors with other Voltage and frequency ratings are available on specific Demand.

- Three Phase: 2.20 kW To 37.5 kW/ 230 - 380 - 460Volt /60 Hz.



MOTOR-A		
SR NO.	PARTS NAME	MATERIAL
01	CABLE 3 CORE/4 CORE	EPR
02	MECH / SEAL	CERAMIC/CARBON
03	BEARING BUSH	CARBON
04	UPPER HOUSING	CAST IRON (F.G 200)
05	MOTOR SHELL	S.S.304
06	ROTOR SHAFT	S.S.431
07	BEARING BUSH	CARBON
08	LOWER HOUSING	CAST IRON (F.G 200)
09	THRUST BEARING SET	CARBON / S.S.420
10	LOWER PART-2	CAST IRON (F.G 200)
11	PRESSURE CUP	H.B.R
12	MOTOR BASE	CAST IRON (F.G 200)
13	ALL HARDWARE	S.S.304

P _N		PW L [IN]	PW L [IN]	MOTOR WEIGHT [LBS]		MOTOR WEIGHT (incl.pkg) [LBS]	
[kW]	[HP]	C.I.	S.S.	S.S. 304	Cast Iron	S.S. 304	Cast Iron
2.2	3.0	25.9	25.1	52.9	44.1	59.5	52.9
3.7	5.0	26.3	25.5	86.0	77.2	94.1	86.9
4.1	5.5	26.9	26.1	94.8	86.0	103.0	95.7
5.5	7.5	29.4	28.6	101.4	108.0	112.9	119.5
7.5	10.0	30.6	29.8	110.2	119.1	119.5	127.4
9.3	12.5	31.6	31.0	116.8	130.1	125.2	138.9
11.0	15.0	33.4	32.6	134.5	138.9	142.9	146.8
13.0	17.5	35.3	34.4	141.1	147.7	149.3	155.9
15.0	20.0	36.9	36.1	154.3	156.5	164.5	165.8
18.5	25.0	39.1	38.3	167.6	176.4	175.9	184.1
22.0	30.0	42.0	41.2	198.4	198.4	207.7	207.9
26.0	35.0	44.4	43.6	207.2	213.9	216.1	222.7
30.0	40.0	49.1	48.3	224.9	220.5	238.1	231.5
37.0	50.0	53.0	53.0	281.1	276.7	294.3	287.7



Technical Data

6" Water Filled Rewindable Motor Data

6WVS



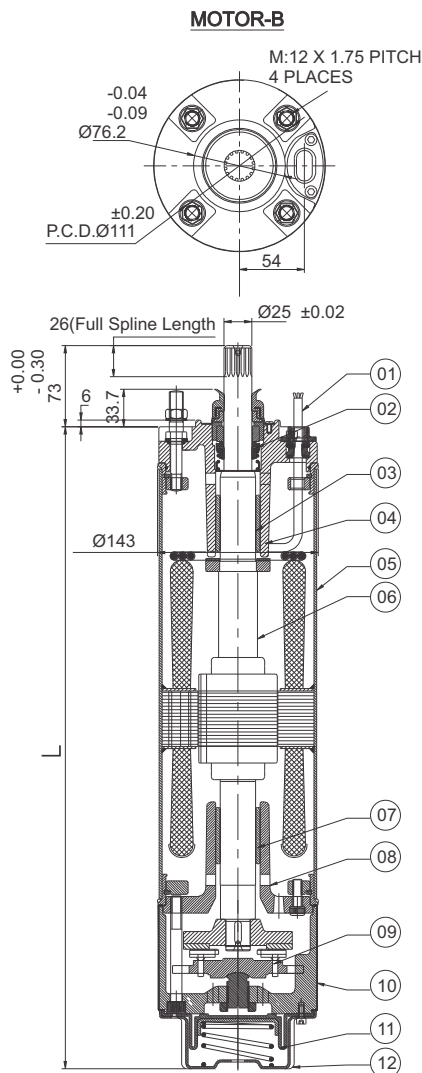
TECHNICAL SPECIFICATIONS :

- 6" Water Lubricated Submersible Motors are rewindable.
- Coupling dimensions as per NEMA standard.
- Winding wire : Polywrapped / PVC winding available on specific demand
- Degree of protection : IP68.
- Max water temperature : 35°C / 95°F
- Starts per hour : 30 times (Max.).
- Allowable voltage variation : +6% - 10%.
- Motor shaft of Stainless steel.
- Stator shell of Stainless steel.
- Max depth immersion : 350 M.
- Mounting : vertical / horizontal.
- Motor Cable length : 3 Meter / 3 Core with separate earth cable & 4 Core.
- Cooling Flow : $V=0.2$ M/S.
- Coolant : Clear Water.

VERSIONS

Motors with other Voltage and frequency ratings are available on specific Demand.

- Three Phase: 2.20 kW To 37.5 kW/ 230 - 380 - 460Volt /60 Hz.



MOTOR-B		
SR NO.	PART'S NAME	MATERIAL
01	CABLE 3 CORE/4 CORE	EPR
02	MECH. SEAL	CERAMIC/CARBON
03	BEARING BUSH	CARBON
04	UPPER HOUSING	S.S.304 / CAST IRON WITH CLADED
05	MOTOR SHELL	S.S.304
06	ROTOR SHAFT	S.S.431
07	BEARING BUSH	CARBON
08	LOWER HOUSING	CAST IRON (F.G 200)
09	THRUST BEARING SET	CARBON / S.S.420
10	LOWER PART-2	CAST IRON WITH CLADED
11	PRESSURE CUP	H.B.R
12	MOTOR BASE	S.S.304
13	ALL HARDWARE	S.S.304

P _N		PW L [IN]	PW L [IN]	MOTOR WEIGHT [LBS]		MOTOR WEIGHT (incl.pkg) [LBS]	
[kW]	[HP]	C.I.	S.S.	S.S. 304	Cast Iron	S.S. 304	Cast Iron
2.2	3.0	25.9	25.1	52.9	44.1	59.5	52.9
3.7	5.0	26.3	25.5	86.0	77.2	94.1	86.9
4.1	5.5	26.9	26.1	94.8	86.0	103.0	95.7
5.5	7.5	29.4	28.6	101.4	108.0	112.9	119.5
7.5	10.0	30.6	29.8	110.2	119.1	119.5	127.4
9.3	12.5	31.6	31.0	116.8	130.1	125.2	138.9
11.0	15.0	33.4	32.6	134.5	138.9	142.9	146.8
13.0	17.5	35.3	34.4	141.1	147.7	149.3	155.9
15.0	20.0	36.9	36.1	154.3	156.5	164.5	165.8
18.5	25.0	39.1	38.3	167.6	176.4	175.9	184.1
22.0	30.0	42.0	41.2	198.4	198.4	207.7	207.9
26.0	35.0	44.4	43.6	207.2	213.9	216.1	222.7
30.0	40.0	49.1	48.3	224.9	220.5	238.1	231.5
37.0	50.0	53.0	53.0	281.1	276.7	294.3	287.7



Performance Data of 6" Rewindable submersible Motors / 60 Hz

P _N		P _{max} [kW]	Thrust Load [N]	U _N [V]	n _N [min-1]	I _N [A]	I _A [A]	η (Eff.) [%] at % load			COS Ø (PF) At % load			T _N [Nm]	T _A [Nm]
[H.P.]	[kW]							50	75	100	50	75	100		
3.00	2.2	2.5	15500	230	3520	10	40	70	73	76	0.51	0.62	0.72	6.64	9.8
				380	3530	6.51	33	66	71	76	0.50	0.61	0.70	5.97	8.00
				460	3520	5.59	28	70	75	77	0.55	0.65	0.74	6.64	8.13
5.00	3.7	4.6	15500	230	3520	26.11	105	71	75	77	0.53	0.64	0.73	12.49	18.6
				380	3530	13.30	62	67	72	77	0.51	0.64	0.71	12.41	15.1
				460	3520	10.11	51	71	76	78	0.56	0.68	0.75	12.48	15.3
7.50	5.5	6.3	15500	230	3490	26.11	106	74	78	78	0.62	0.73	0.80	17.29	15.9
				380	3480	15.39	62	75	78	78	0.65	0.75	0.81	17.29	15.0
				460	3480	12.90	51	75	77	77	0.66	0.76	0.82	17.29	15.1
10.0	7.5	8.6	15500	230	3490	35.91	145	75	78	79	0.59	0.71	0.78	23.58	22.41
				380	3485	20.79	81	76	78	79	0.65	0.75	0.81	23.58	20.20
				460	3470	17.20	65	76	78	78	0.67	0.78	0.82	23.70	19.40
15.0	11	12.7	15500	230	3480	51.21	221	77	80	81	0.61	0.72	0.80	34.59	35.61
				380	3490	30.29	129	77	81	81	0.62	0.74	0.80	34.51	34.30
				460	3480	25.00	97	78	81	80	0.69	0.77	0.83	34.70	31.50
20.0	15	17.3	15500	230	3500	65.89	324	80	82	83	0.64	0.74	0.81	47.1	59.52
				380	3490	39.10	188	81	83	83	0.66	0.77	0.83	47.2	56.50
				460	3495	32.11	150	80	83	83	0.69	0.78	0.84	47.1	55.61
25.0	18.5	21.3	15500	230	3490	85.39	401	77	81	82	0.60	0.71	0.77	58.11	81.81
				380	3490	52.49	249	77	81	81	0.59	0.70	0.77	58.11	83.60
				460	3480	40.60	183	80	82	82	0.65	0.76	0.81	58.39	74.51
30.0	22	25.3	15500	230	3510	100.2	521	81	84	84	0.66	0.74	0.77	68.78	96.61
				380	3510	59.89	390	82	83	84	0.67	0.76	0.78	68.78	94.91
				460	3500	47.11	231	83	84	84	0.72	0.79	0.81	69.10	85.80
40.0	30	34.5	27500	230	3510	135.7	757	78	81	83	0.59	0.71	0.78	93.81	139.61
				380	3510	79.59	436	79	83	84	0.62	0.75	0.81	93.89	132.90
				460	3500	64.41	345	81	83	84	0.63	0.76	0.82	94.00	126.41
50.0	37.0	42.6	27500	230	3510	135.6	757	78	82	83	0.59	0.71	0.78	93.78	139.61
				380	3510	102.7	568	77	81	82	0.59	0.72	0.78	115.8	193.61
				460	3500	79.12	430	81	84	85	0.63	0.75	0.82	115.9	177.80

- P_N - Rated Output
- U_N - Rated Voltage
- n_N - RPM
- I_N - Full Load Current
- I_A - Starting Current

- η - Motor Efficiency
- cos Ø - Power Factor
- T_N - Full Load Torque
- T_A - Starting Torque
- F_[N] - Axial Thrust Load



Technical Data

8" Water Filled Rewindable Motor Data

8WVG



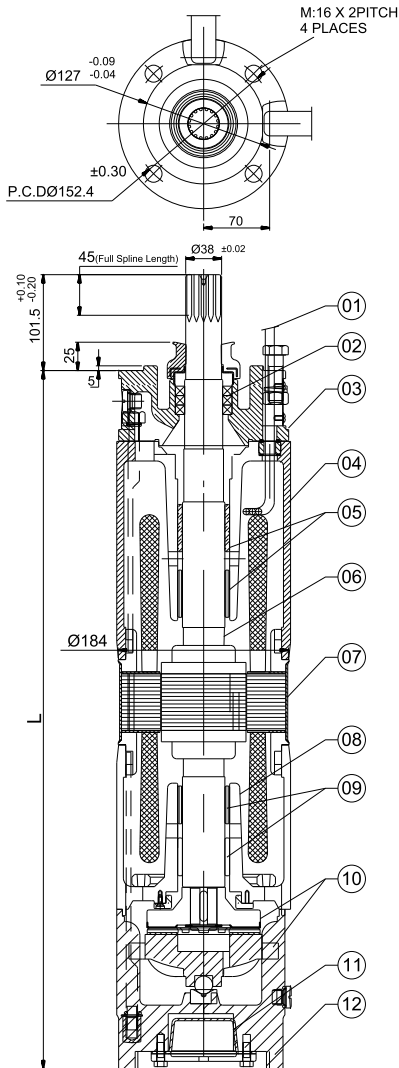
TECHNICAL SPECIFICATIONS :

- 8" Water Lubricated Submersible Motors are rewindable.
- Coupling dimensions as per NEMA standard.
- Winding wire : Polywrapped / PVC winding available on specific demand
- Degree of protection : IP68.
- Max water temperature : 35°C / 95°F
- Starts per hour : 20 time (Max.).
- Allowable voltage variation : +6% - 10%.
- Motor shaft of Stainless steel.
- Stator shell of Stainless steel.
- Max depth immersion : 350 M.
- Mounting : vertical / horizontal.
- Motor Cable length : 3 Meter / 3 Core with separate earth cable & 4 Core.
- Cooling Flow : V:0.2 M/S.
- Coolant : Clear Water.

VERSIONS

Motor With Other Voltage and frequency ratings are available on specific Demand.

- Three Phase: 30 kW To 55 kW/ 380-460 Volt /60 Hz.



SR NO.	PARTS NAME	MATERIAL
01	CABLE 3 CORE/4 CORE	EPR
02	OIL SEAL	N.B.R
03	ADAPTOR	CAST IRON(FG-200)
04	UPPER HOUSING	CAST IRON(FG-200)
05	BEARING BUSH	LTB-4 (2% Ni.) / M.S-N.B.R
06	ROTOR SHAFT	S.S.431
07	MOTOR SHELL	S.S.304
08	LOWER HOUSING	CAST IRON(FG-200)
09	BEARING BUSH	LTB-4 (2% Ni.) / M.S-N.B.R
10	THRUST BEARING SET	CARBON / S.S.420
11	PRESSURE CUP	H.B.R
12	MOTOR BASE	CAST IRON(FG-200)
13	ALL HARDWARE	S.S.304

P _N		PW L [IN] C.I.	MOTOR WEIGHT [LBS]	MOTOR WEIGHT (incl.pkg) [LBS]
[kW]	[HP]		Cast Iron	Cast Iron
30.0	40.0	49.2	266.8	302.9
37.0	50.0	52.0	304.2	344.8
45.0	60.0	52.0	363.8	404.3
55.0	75.0	54.3	452.0	491.6



Performance Data of 8" Rewindable Submersible Motors / 60 Hz

P _N		Thrust Load [N]	U _N [V]	n _N [min-1]	I _N [A]	I _A [A]	η (Eff.) [%] at % load			COS Ø (PF) At % load			T _N [Nm]	T _A [Nm]
[H.P.]	[kW]						50	75	100	50	75	100		
40.0	30	45 000	380	3500	73	393	82.3	84.6	84.6	0.81	0.86	0.88	99	142
			460	3495	60	325	81.5	83.5	83.4	0.82	0.86	0.89	99	131
50.0	37	45 000	380	3510	91	513	83.2	85.1	85.4	0.76	0.82	0.85	121	178
			460	3490	75	407	83.8	85.4	84.8	0.77	0.85	0.87	122	163
60.0	45	45 000	380	3510	110	660	83.5	85.7	85.8	0.73	0.81	0.85	149	241
			460	3505	90	523	85.0	86.5	86.3	0.77	0.84	0.87	149	220
75.0	55	45 000	380	3520	137	841	84.3	86.5	86.5	0.72	0.81	0.84	182	320
			460	3515	108	658	85.7	87.1	86.8	0.77	0.84	0.88	181	288

- P_N - Rated Output
- U_N - Rated Voltage
- n_N - RPM
- I_N - Full Load Current
- I_A - Starting Current
- η - Motor Efficiency
- cos Ø - Power Factor
- T_N - Full Load Torque
- T_A - Starting Torque
- F_[N] - Axial Thrust Load



Submersible Rewindable Motors



4WS2E

4WS3E

6WSE

6WVG

6WVS

8WVG

Control Box

For Single Phase Submersible Electric Motor

METAL CONTROL BOX

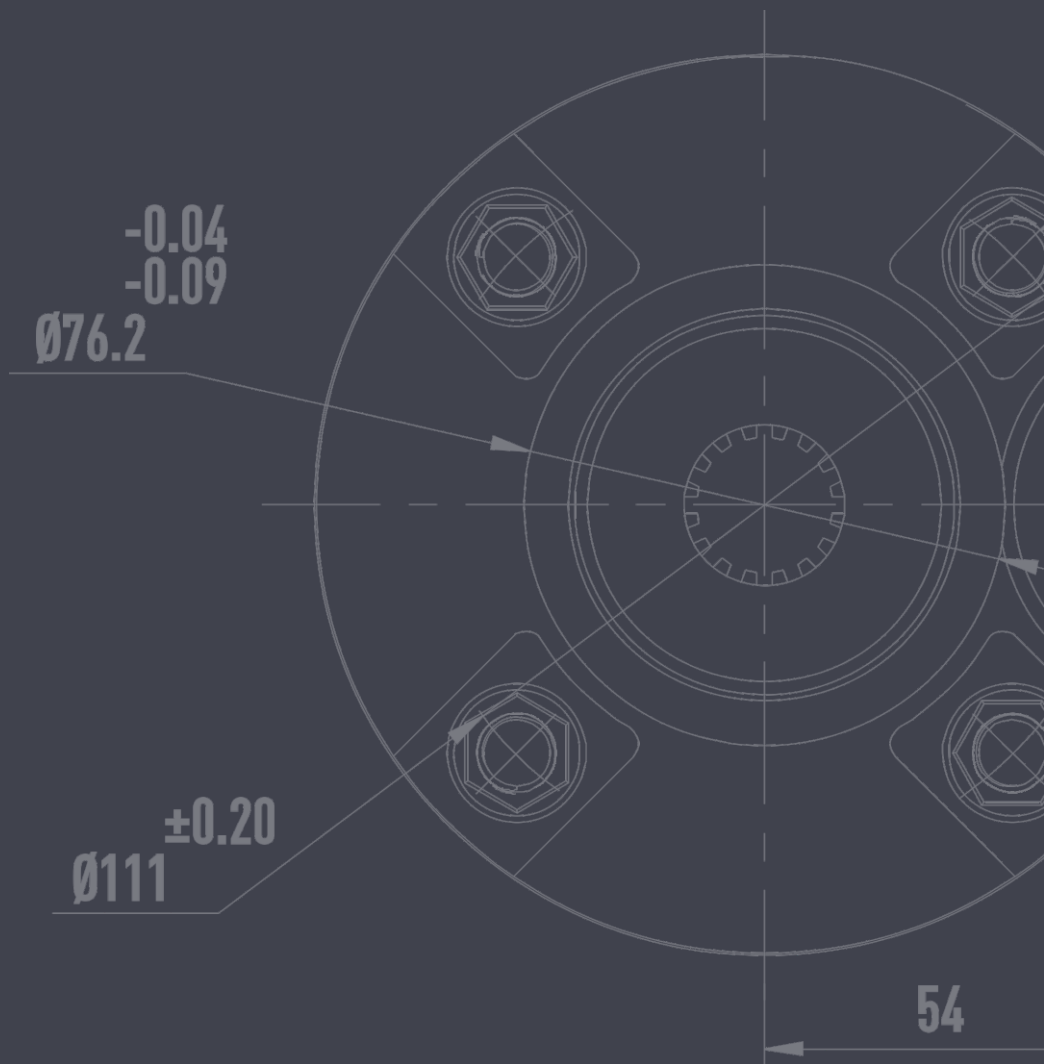
TECHNICAL FEATURES

- Enclosure made in painted steel.
- Available in:
 - PSC running capacitor
 - CSCR starting capacitor and running capacitor
 - CSIR starting capacitor/induction run.
- Voltmetric relay.
- Suitable for indoor and outdoor installation.
- External access to thermal protection.

RANGE:

- PSC: from 0,37kW to 2,2kW
- CSIR: from 0,37kW to 3,7kW
- CSCR: from 0,37kW to 0,75kW.





Wizard fluid system llc

Pumps | Motors | Pipe | Valves

Reg. Office : 454 E Amberside Dr. Elgin IL - 60124.

Sales Office : 1600 Golf Road -Suite 1268 Rolling Meadows IL-60008.

Email : info@wizardfluidsystem.com, Website : www.wizardfluidsystem.com